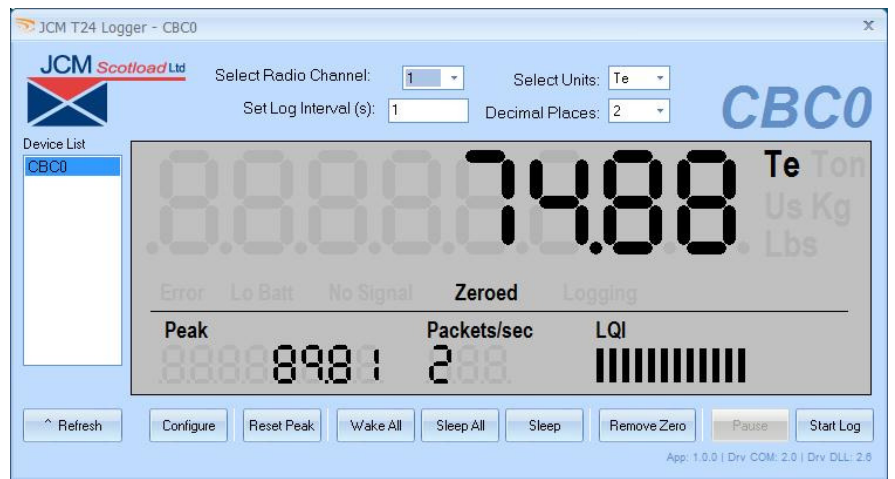


Features

- Real time viewing of Load readings
- Logging of readings and automatic transference and graphing straight into Excel
- Units of measurement can be selected to match Loadcell Unit.
- Selectable logging rates
- Unit resolution can be changed without restriction.
- Load cell can be switched off/On from PC to make start/stop operations effortless.
- Peak load function
- Runs perfectly with or without the standard Handset.
- Disabling of radio buttons during test to prevent misuse/accidental pressing whilst logging.



- Example showing entire options and readout without having to swap between different screens.
- You can load your companies logo in the top left at any time.

Introduction

The JCM T24 Logging Software has been exclusively designed for today's load testing requirements. Using a JCM T24 loadcell, a user can simply run the program, select a test name and begin recording without any complicated setup issues. Gone are the manual transference/porting of data to Excel for graph as this is now automatic.

The software is especially ideal for Mooring, Bollard and waterbag/spreaderbar tests where capturing the essential test results is essential without complications.

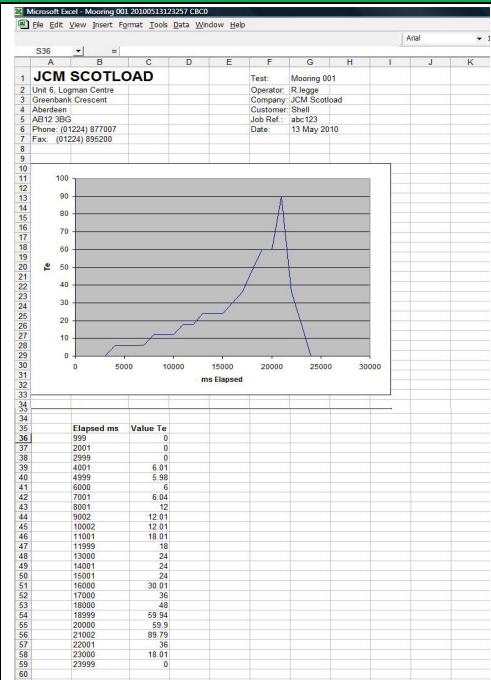
Specifications & Requirements

➤ HARDWARE

- JCM T24 Base station Module (Plugs into PC)
- JCM Transducer loadcell with T24 transmitter.
- PC computer

➤ SOFTWARE

- Windows XP/Vista/Windows 7
- Microsoft Excel 2001 to 2007
- T24 toolkit (included with product)



Graph screen automatically generated



UNIT 6, LOGMAN CENTRE, GREENBANK CRESCENT
EAST TULLOS, ABERDEEN, AB12 3BG

TEL: +44 (01224) 877007, FAX: +44 (01224) 895200

info@scotload.com

www.scotload.com