



The 2000 SC load shackle provides a simple and reliable method of measuring a wide range of loads and, weights and is ideal for measurement applications with limited headroom. Capacities available start from 25 tonnes to 1000 tonnes.

- **Unique manufacturing from raw materials**
- **Special load bobbin design**
- **Robust anti-rotation bracket**
- **IP66 sealing**
- **Ideal for reduced height load monitoring**
- **Re-chargeable or disposable battery power**
- **Traceable calibration**

The DH3 remote handset offers:

- Ability to monitor 4 separate units of measurement
- Display peak
- High resolution, easy to read display
- Push button zero
- RS232 output
- 6 full digit
- Easy to replace disposable battery power

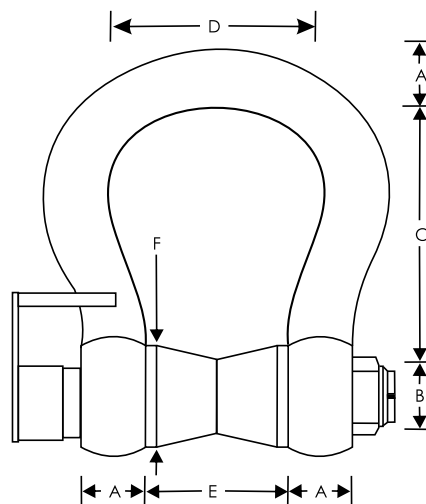


Typical Specification

Rated Load	25 to 1000 tonnes
Proof Load	150% of rated load
Ultimate Load	400%
Recommended Excitation Voltage	10V
Maximum Excitation Voltage	15V
Zero Balance	< +/- 1%
Bridge Resistance	700 ohm
Insulation Resistance	>2G Ohm @ 100V
Accuracy	+/- 1% of reading *
Repeatability	+/- 0.25% of reading
Sensitivity	2.0mV/V
Zero Temperature Co-efficient	< +/- 0.005%
Span Temperature Co-efficient	< +/- 0.003%
Operational Temperature Range	-10 to +50°C
Electrical Connection	Red +ve Supply, Green + ve Signal Blue - ve Supply, Yellow - ve Signal
Environmental Protection	IP67
Cable Connection	Sub con
Cable Length	Typically 20 - 40 mtrs

*As calibrated in a BS1610 grade 1 test machine, traceable to National Standards

SWL TONNE	A mm	B mm	E mm	C mm	D mm	F mm	WEIGHT kgs
25	45	50	74	178	126	87	15
35	50	57	83	178	126	94	21
55	65	70	105	254	185	107	41
85	75	80	127	330	190	130	63
110	80	82	127	330	200	134	70
120	89	95	150	381	238		110
140	90	95	133	381	238		105
150	102	108	170	400	275	174	160
175	102	108	140	400	250		150
200	120	125	180	500	290	208	235
250	125	140	200	540	305	210	285
300	135	150	200	600	305	232	340
400	165	175	225	650	325	280	560
500	175	185	250	700	350		685
600	195	205	275	700	375		880
700	205	300	300	700	400		980
800	210	220	300	700	400		1100
900	220	230	320	700	420		1280
1000	230	240	340	700	420		1460



Load measurement specialists

Scotload Ltd
Unit 6, Logman Centre
Greenbank Crescent
East Tullos
Aberdeen
Scotland
AB12 3BG

Tel: +44 (0)1224 877007
Fax: +44 (0)1224 895200
info@scotload.com
www.scotload.com

Due to continuous development, Scotload reserve the right to change specification without notice.