



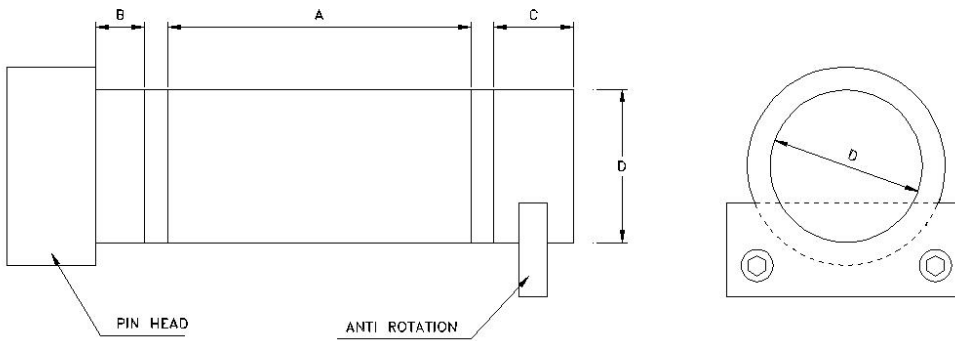
25 Tonne Load Pin c/w ATEX 4-20mA transmitter housed in pin head

Load Measuring Pins are the simplest and most reliable method of measuring loads, and can be used in a great number of situations, including the most severe of environments. They can be incorporated easily and economically into the load path by replacing any existing load bearing pins.

- **In house design enables load pins to be customised to suit application**
- **Use of high tensile strength materials allied to stress relieving heat treatment gives an accurate and repeatable load sensor**
- **All pins are supplied with traceable calibration certificates**



Pin Design



The most critical dimensions are a, b, c and d. Please take care measuring these.

If there are any restrictions i.e. Pin head size, position of anti rotation, overall pin length please mark on drawing.

We will always send you a final drawing for yourself and your customer to approve before manufacture.

load measurement specialists

Scotload Ltd
 Unit 6, Logman Centre
 Greenbank Crescent
 East Tullos
 Aberdeen
 Scotland
 AB12 3BG

Tel: +44 (0)1224 877007
 Fax: +44 (0)1224 895200
 info@scotload.com
 www.scotload.com